

98-4102

\$2.00

Jonathan & Nicole Busarow
4005 Indiana Avenue
Fort Wayne, IN 46807

Commissioned by the choirs of St. Luke Lutheran Church, Silver Spring, Maryland,
in honor of the 50th wedding anniversary of Charles and Judy Sturtz

Comfort, Comfort Now My People

SATB, Organ, C Instrument

Isaiah 40:1-3, 5, 11

Johann Olearius, 1611-84

Tr. Catherine Winkworth, 1827-78, alt.

Donald Busarow, 1934-2011

Quoting FREU DICH SEHR

Trente quatre Pseaumes de David,

Geneva, 1551

Tempo I, ♩ = 90

Instrument
in C



⑤ Tempo II, pulse of ♩ = 60*



Com - fort, com - fort now my peo - ple, says_ your God.

⑦ A mp sim.



Speak_ ten - der - ly to Je - ru - sa - lem, and cry_ to her

*In a chant style; eighth notes are not equal.

A part for C instrument is printed on pages 11-12.

Copying or reproducing this material in any form is illegal.

Copyright © 2012 Concordia Publishing House
3558 S. Jefferson Avenue, St. Louis, MO 63118-3968
All Rights Reserved Printed in U.S.A.



⑨ *SA div.*

that her war - fare is end - ed, that her in - iq - ui - ty is

mp

Ped.

Tempo I ⑫

mf

par-doned.

mf

⑮ Tempo II

mf

Com - fort, com-fort now my peo - ple, says your God.

19

Speak ten - der - ly to Je - ru - sa - lem, and cry to her

mf

20

that her war - fare is end - ed, that her in - iq - ui - ty is par -

TB div.
mf

22 Tempo I

mf *intensify* *holding back*

done.

intensify *holding back*

26 Tempo II

A mf *make*

Tmf *TB div.*

mf

A voice_cries in the wil-der-ness, Pre - pare_the way of the Lord; — make_

30

SA div.
f

straight in the des - ert a high - way for our God. And the

f

32

glo - ry of the Lord shall be re - vealed, and all flesh shall see it to -

35

geth - er, for the mouth of the Lord has spo - ken.

40 **Tempo III**, ♩ = 76-80

mp *holding back*

45 *a tempo*
mp

He will feed His flock, feed His flock like a shep - herd;

mp
a tempo

(if necessary, accompany lightly)

a tempo

Man.

50

He will gath - er the lambs in His arms, in His

mp
a tempo

a tempo

55 arms *mf*

arms, His arms and will car - ry them, car - ry

arms *mf*

(play) *mf*

Ped.

60

them in His bos - om; He will lead those who are with

65

slowing
young.

young, are with young, with young.

young.
slowing

slowing

69 **Tempo I**

mf *f*

To God's peo - ple now pro - claim That God's par - don

mf *f*

75

waits for them! Tell them that their war is

80

o - ver; God will reign in peace for - ev

holding back
dim.
dim.
holding back
holding back
dim.
holding back
dim.

85 **Tempo II**

er, for ev

mf *dim.* *mp* *dim.*

mf *dim.* *dim.*

mf *dim.* *dim.*

dim. *dim.*

88

er more...

p slowing *dim.* *pp*

p slowing *dim.* *pp*

p slowing *dim.* *pp*

p slowing *dim. very slowly* *pp*

Flute 8'

Soft 32'

Comfort, Comfort Now My People

11

Instrument in C

SATB, Organ, C Instrument

Donald Busarow, 1934–2011

Quoting FREU DICH SEHR

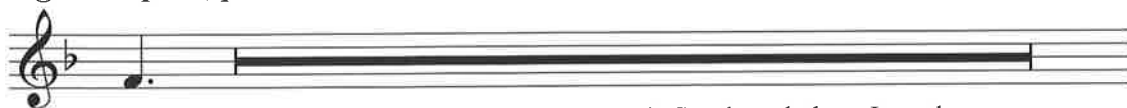
Trente quatre Pseaumes de David,

Geneva, 1551

Tempo I, ♩ = 90



⑤ Tempo II, pulse of ♩ = 60*



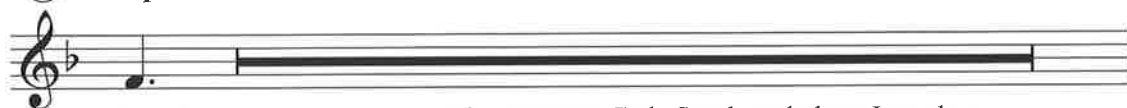
Choir Comfort, comfort now my people, says your God. Speak tenderly to Jerusalem, and cry to her that her warfare is ended, that her iniquity is

Tempo I



par-doned.

⑬ Tempo II



Comfort, comfort now my people, says your God. Speak tenderly to Jerusalem, and cry to her that her warfare is ended, that her iniquity is par-

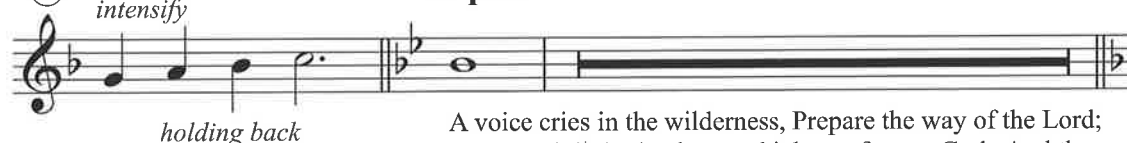
⑳ Tempo I



doned.

㉕ *intensify*

Tempo II



holding back

A voice cries in the wilderness, Prepare the way of the Lord; make straight in the desert a highway for our God. And the

*In a chant style; eighth notes are not equal.

Copying or reproducing this material in any form is illegal.

Copyright © 2012 Concordia Publishing House
3558 S. Jefferson Avenue, St. Louis, MO 63118-3968
All Rights Reserved Printed in U.S.A.

Tempo III, ♩ = 76-80

(32) (40) **4**

glory of the Lord shall be revealed, and all flesh shall see it together, for the mouth of the Lord has spoken.

holding back

(45) **12** (57) **12** (69) **2**

a tempo

(72)

f

(77)

(83) *holding back* **Tempo II**

dim. *mf* *dim.* *mp*

(87)

dim. *p slowing* *dim.* *pp*

